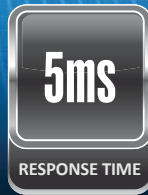
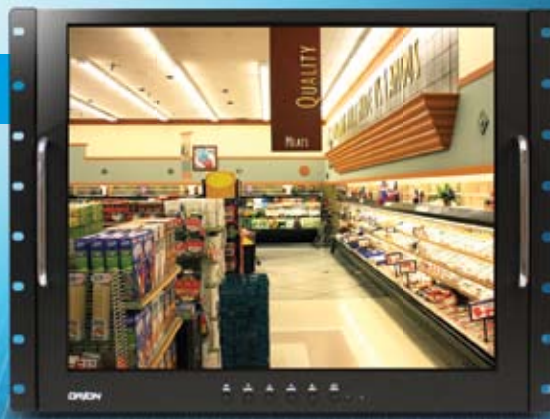


**LED**

**RACK MOUNT READY**



# 19RCR

BUILT TO RUN 24 X 7 X 365 CONTINUOUSLY

## OVERVIEW

The ORION Images 9RCRD, 15RCR, 17RCR and 19RCR LCD CCTV monitors with Tilt capability are designed with a Metal Cabinet and LCD Protective Glass for use in harsh environments ready to be installed into rack mount cabinets. The RCR series is ideal for Factory Control Rooms, Automotive, Marine, Industrial Panel PC, and special Kiosk applications.

## FEATURES

- Industrial Electronic Galvanized Iron Cabinet
- LED Backlight Unit
- 1280 x 1024 @ 75Hz Resolution, 350 Nits, 1000:1 Contrast Ratio
- BNC Video 2 In / 2 Out, S-Video 1 In, HDMI In 1 In, VGA 1 In, Audio 1 In, PC Stereo 1 In
- 3D Motion Adaptive Deinterlacer / Noise Reduction
- 1W x 2 Built-In Speakers
- 8U Rack Mounting Form Factor



### SPECIFICATIONS

19RCR	
<b>Display</b>	
Screen Size	19 Inch
Backlight Unit	LED BLU
Max. Resolution	1280 x 1024 @ 75Hz
Pixel Pitch	0.294 x 0.294mm
Brightness	350cd/m <sup>2</sup>
Contrast Ratio	1000 : 1
Aspect Ratio	5 : 4
Viewing Angle (H/V)	170° / 160°
Display Color	16.7 Million
Response Time	< 5ms
Video System	NTSC / PAL
<b>Interface</b>	
Video In / Out (BNC Type)	2 In / 2 Out
HDMI In	1 In
S-Video In	1 In
VGA In (15Pin D-Sub)	1 In
Audio In (RCA Type)	1 In
PC Stereo In	1 In
<b>Transmitter</b>	
Remote Control	Yes
<b>Audio</b>	
Built-in Speakers	Yes (1W x 2)
<b>Features</b>	
Filter Type	3D Motion Adaptive De-interlacer
Noise Reduction	Yes
Multi Language	English, Spanish, French, German, Italian
<b>General</b>	
Outline Dimension (W x H x D)	18.98" x 13.90" x 2.87"
Net Weight	5.8Kg (12.79 lbs)
Material / Color	Electronic galvanized iron / Black
Tilt Function	Yes
Part / Labor	3year / 3year
Consumption: < On	< 20W
	AC100 ~ 240V(50/60Hz)
Electrical Ratings	DC12V / 3.5A
Operating Temperature	0° ~ 40° C / 32° ~ 104° F
Storage Temperature	-20° ~ 60° C / -4° ~ 140° F
<b>Mounts</b>	
VESA™ Mount Size	100 x 100mm
Wall	WB-5, WB-10, WB-30, WB-31
Ceiling	CMK-01
Form Factor	8U Rack Mounting
Mount Type	Tilttable Rack Mount

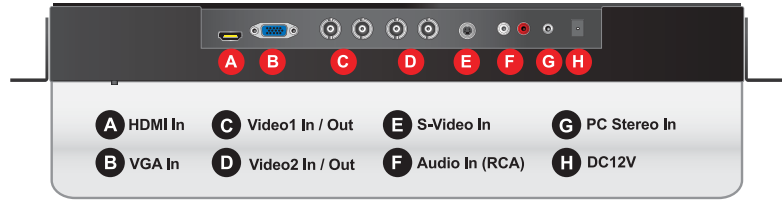
\*Design and specifications are subject to change without notice

### TILT CAPABILITY

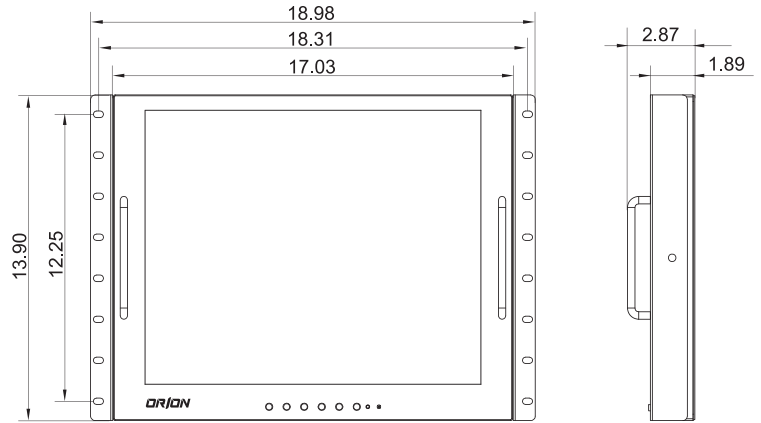
RCR series has flexible tilttable rack mount capability



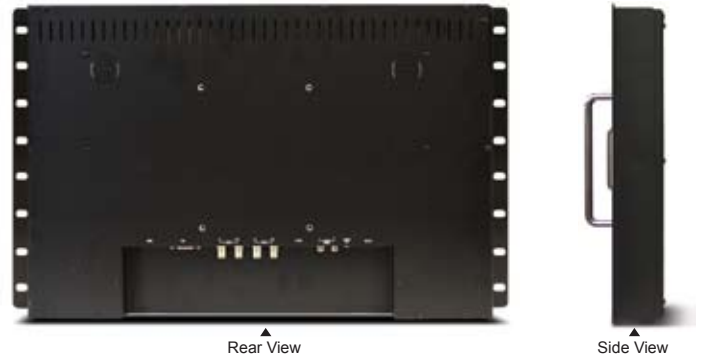
### INPUT INTERFACE



### DIMENSIONS



### OTHER VIEW



### OPTIONAL MOUNTS

